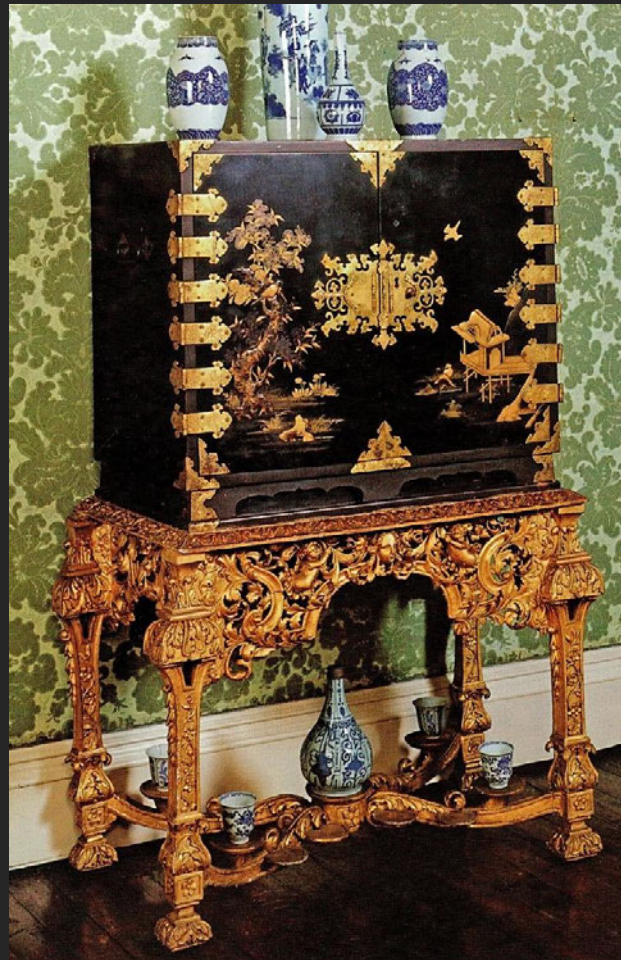


Tohoku Forum for Creativity, 13-14 February 2017: Knowledge and Arts on the Move.

Mechanisms of Display. Continuities and Discontinuities in European and Japanese Cabinets



UNIVERSITÄT
HEIDELBERG
ZUKUNFT
SEIT 1386

Dagmar Eichberger, University of Heidelberg, Institut für Europäische Kunstgeschichte



INSTITUT FÜR
EUROPÄISCHE
KUNSTGESCHICHTE

The Nomadic Object: Early Modern Religious Art in Global Contact



Companion Public Program: "Circulating Baraka: Relics as Images across Eras of Mechanical Reproduction"

Although the role of relics in Islam has often been contested, in many parts of the Islamic world images of the relic of the Prophet Muhammad's sandal still circulate in a wide variety of media. These images are sometimes said to convey the baraka (blessing) of the Prophet.

Workshop

The Nomadic Object: Early Modern Religious Art in Global Contact

By Invitation Only

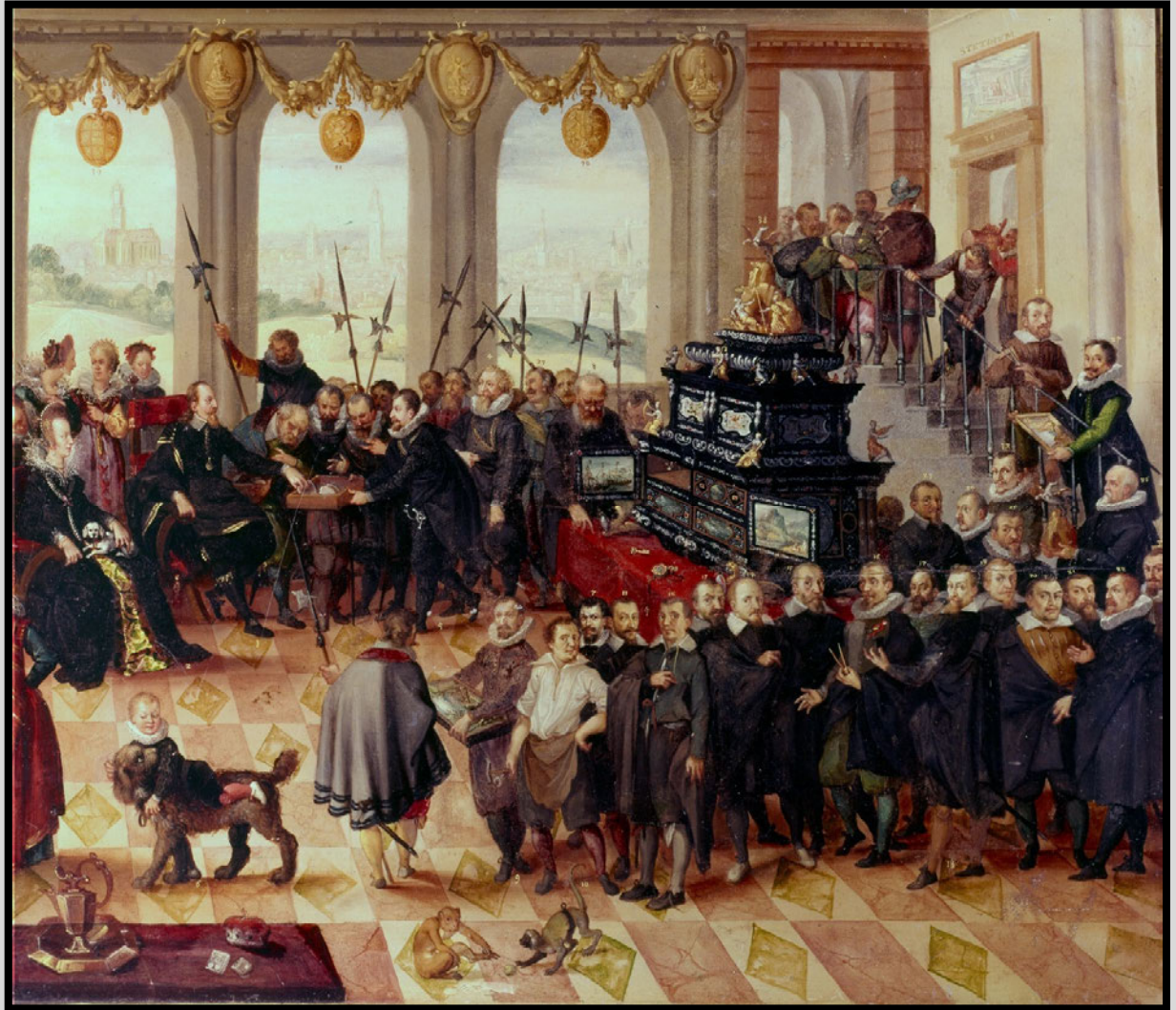
Date
January 18-20, 2016

Sixteenth-century curiosity about the rest of the world brought societies, and their cultural artifacts, into sustained, regular interaction. With the opening of the Louvre Abu Dhabi, the collecting of cross-cultural objects has again captured the public imagination. This workshop considers how the art of contact problematized the

COLLECTION CABINET by Philipp Hainhofer (so-called ‚Pommerscher Kunstschränk‘), Augsburg, 1612.



Destroyed in World War II



Anton Mozart: *The presentation of the collection cabinet to Philipp II of Pomerania by the agent Philipp Hainhofer, 1612.*



1612: Art Cabinet with Parnassus, nine muses, liberal arts, Philipp Hainhofer at the Court of Philipp II, Duke of Pomerania. Anton Mozart, Berlin, KGM.

THE SIXTEENTH CENTURY WRITING CABINET



Cabinet with Intarsia, Augsburg, 1575-1600, London: A. Kaufmann, veneer from various woods, H: 63cm, W: 101cm, D: 47cm.



Spanish writing cabinet (*varguero*), walnut with iron and ivory inlay, early 17th century. Boston, MFA.

THE SIXTEENTH CENTURY WRITING CABINET

VERSATILITY

- closed → opened
- fall front
- top flap
- drawers
- individual compartments



Cabinet with Intarsia, probably made in Augsburg, 1575-1600, London: A. Kaufmann. Veneer from various woods, H: 63cm, W: 101cm, D: 47cm.



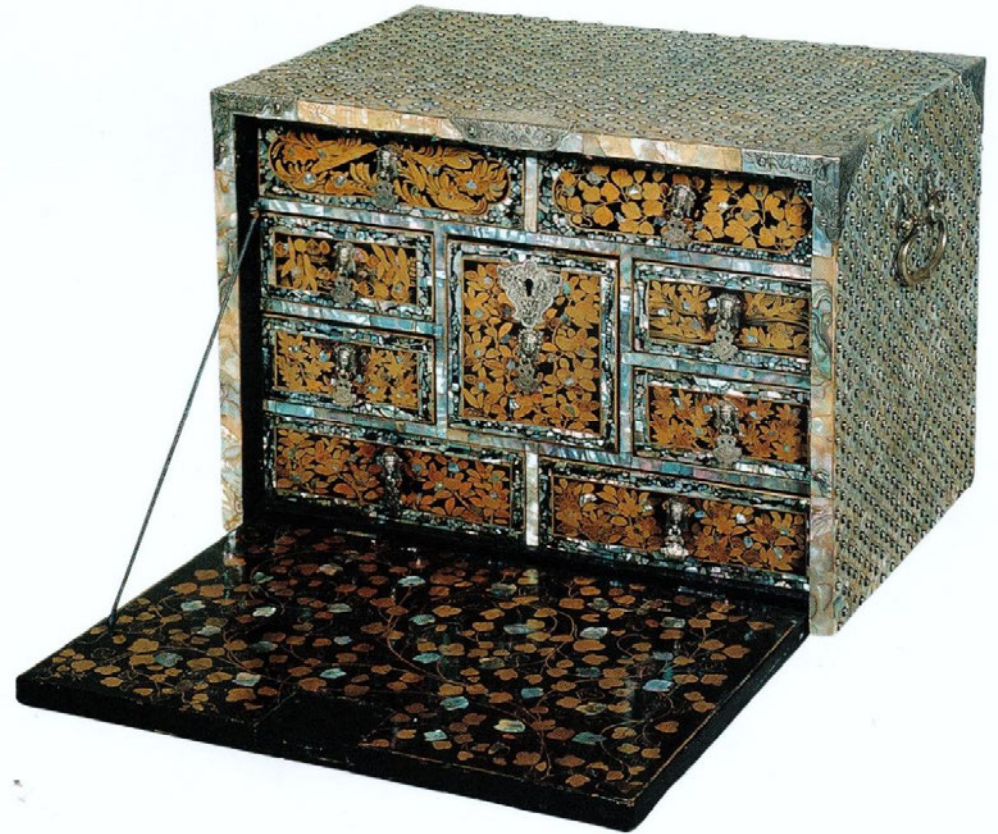


TOP FLAP WITH INTARSIA: Child in a cartouche, scroll work, architecture, plants, tendrils and birds.



WRITING FLAP: A man on horseback, scrolls, animals, musical instruments.

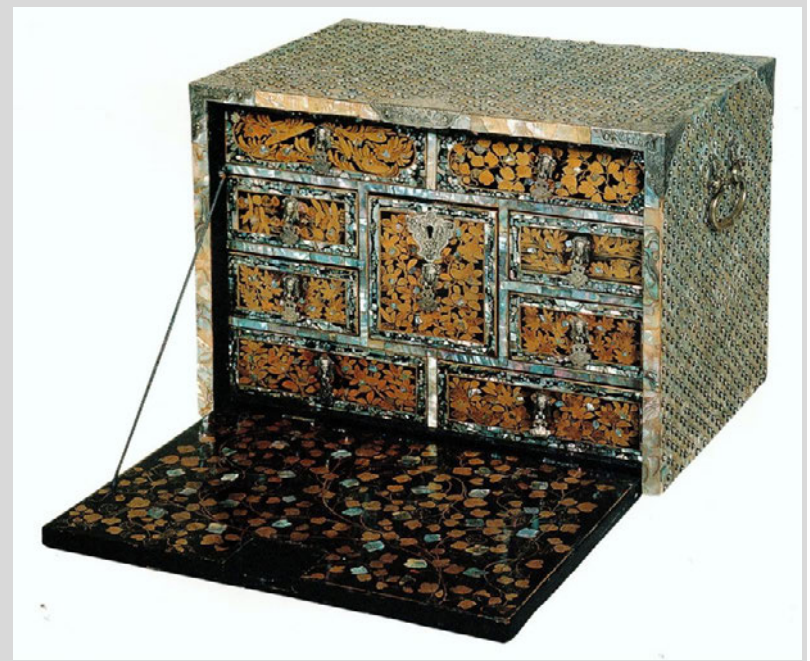
JAPANESE FALL-FRONT CABINETS



Japanese Cabinet, early 17th century
EXTERIOR: Mother-of-pearl with silver rivets
INTERIOR: Black lacquer with hiramaki-e and mother-of-pearl inlay. Kobe, City Museum.

Japanese Cabinet, late 16th century, Momoyama period (1573–1615), lacquered wood with gold and silver hiramaki-e; mother-of-pearl inlay, H. 41.3 cm; W. 62.5 cm; D. 34 cm. New York, MM.

LACQUER AND MOTHER-OF-PEARL



Japanese export chest, wood covered with plates of shell held by gilded copper rivets and black and gold hiramaki-e, circa 1600, London, V & A.

ORNAMENTAL BORDERS



Japanese Cabinet, late 16th century, Momoyama period (1573–1615), lacquered wood with gold and silver hiramaki-e; mother-of-pearl inlay, H. 41.3 cm; W. 62.5 cm; D. 34 cm. New York, MM.



Japanese Namban Lacquer cabinet (KK 5421), front and back, before 1596, mother-of-pearl inlay, H. 31 cm, B. 42,5 cm, T. 29 cm. Vienna, Kunsthistori-sches Museum, Kunstskammer.



CABINETS WITHOUT FALL-FRONT

Japanese cabinet, late Momoyama, early 17th century, gold maki-e on black lacquer with mother-of-pearl; gilt-bronze mounts. 21.3 x 32.2 x 23.3cm, New York, MM.

Back of the same cabinet.



NAMBAN STYLE → TRANSITIONAL STYLE → PICTORIAL STYLE [chronology by Oliver Impey & Christiaan Jörg].



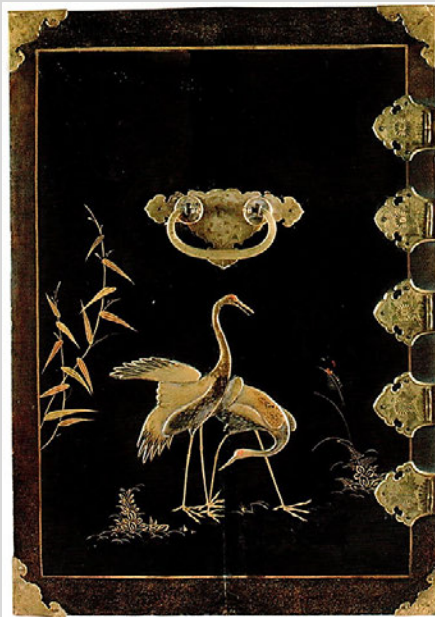
Japanese export cabinets, 17th century, Munich, Staatliche Münzsammlungen, installation shot 2011.

Japanese cabinet with two deer at a river, second half 17th century, 10,7 x 95,2 x 52,1cm, Munich, Staatliche Münzsammlungen, LK 015.



Japanese export cabinet, second half 17th century: two deer in an autumn landscape, 70,7 x 95,2 x 52,1cm, Munich Staatliche Münzsammlungen, LK 015.

TRANSFORMATIONS



LEFT SIDE (closed cabinet)



RIGHT SIDE (closed cabinet)



JAPANESE CABINET WITH ITS ORIGINAL SET OF DRAWERS AND COMPARTMENTS



Japanese export cabinet, Seville, Holy Ghost monastery [Kawamura 2008].



ADAPTATIONS



Rastatt, Schloss Favorite, mirror cabinet.

Japanese export cabinet with its original pedestal, second half 17th century; European stand: 17th or 18th century, gilded wood, Chinese porcellan, Dayton House, Northhamptonshire.

EARLY GERMAN CABINET WITH TWO DOORS: THE „WRANGELSCHRANK“ [1566]



Augsburg cabinet, oak, alabaster, 1566, 70 x 100 x 47cm, Münster, Landesmuseum Westfalen.

NETHERLANDISH CABINET FROM ANTWERP [circa 1650]: EBONY, TORTOISE AND OIL PAINTINGS



School of Peter Paul Rubens, Antwerp cabinet, circa 1650, ebony, tortoise, 165 x 113 x 51 cm, Amsterdam, Rijksmuseum



Antwerp cabinet (Peter van Avont?), Lisbon, Museu Nacional de Arte Antiga.



Japanese lacquer cabinet, circa 1680-1700, Schloss Veltrušy.