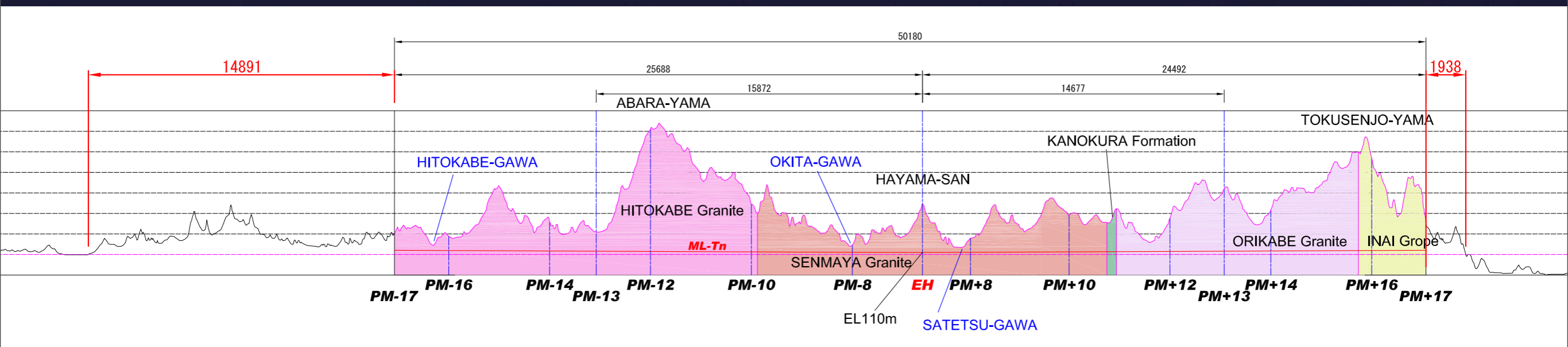
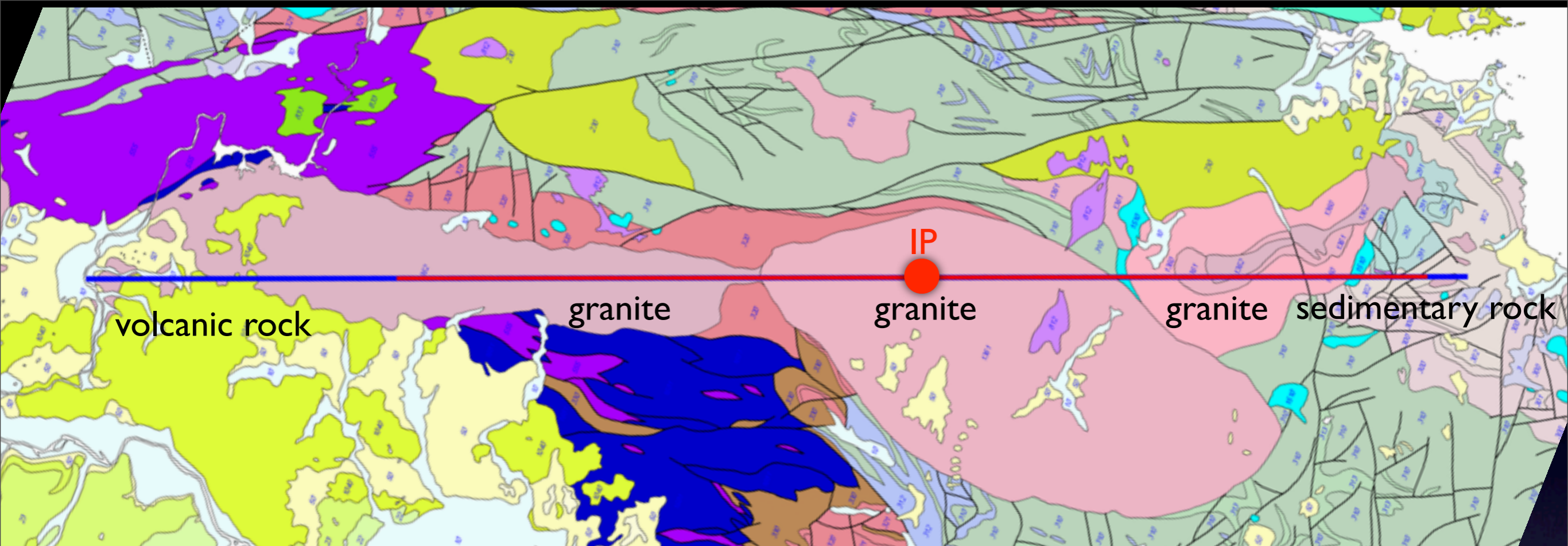


ILC Tunnel Length at Kitakami Site

Tomoyuki SANUKI
(Tohoku University)

The longest tunnel in Kitakami

- Assumption: Extension of 500 GeV ILC
 - elevation
 - formation (x-ing angle, laser-straight / following geoid)
- Topology determines the length



$$14.9\text{km} + 50.2\text{km} + 1.9\text{km} = 67\text{km}$$

Questions

1. Technology in ~2060

- SCRF, CLIC, or w/o material

2. Experimental hall

- i. No new EH \implies Asymmetric collision, timing issue
- ii. new EH \implies X-ing angle

3. laser-straight or following geoid

